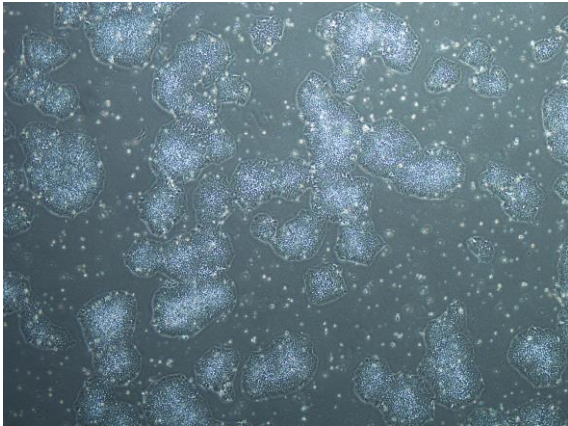
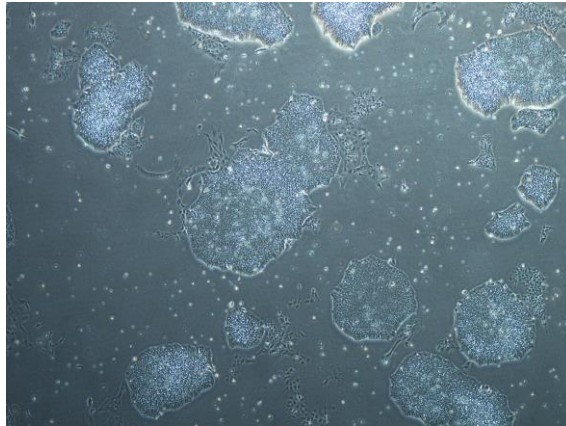


【 CiRA-j-1401 】 Morphology of iPSC colonies

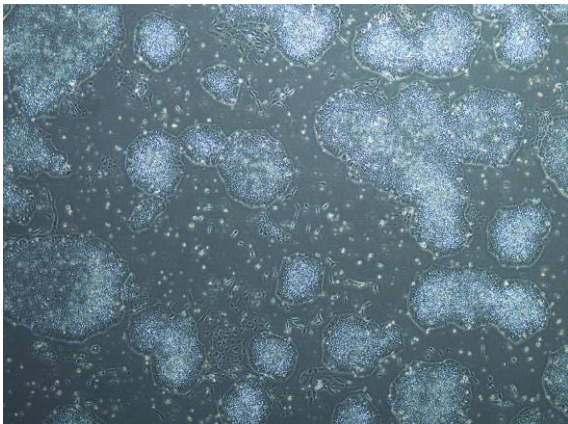
CiRA-j-1401-A: passage-3



CiRA-j-1401-B: passage-3



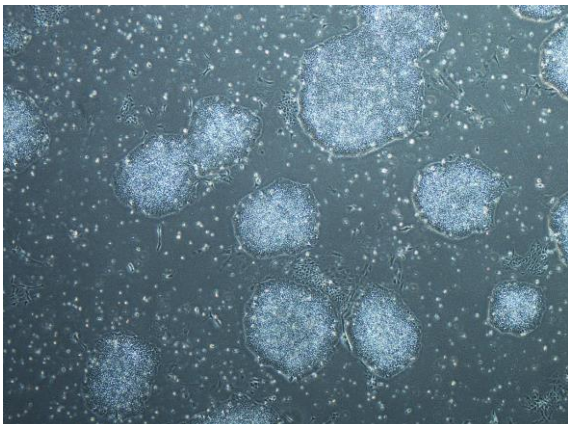
CiRA-j-1401-C: passage-3



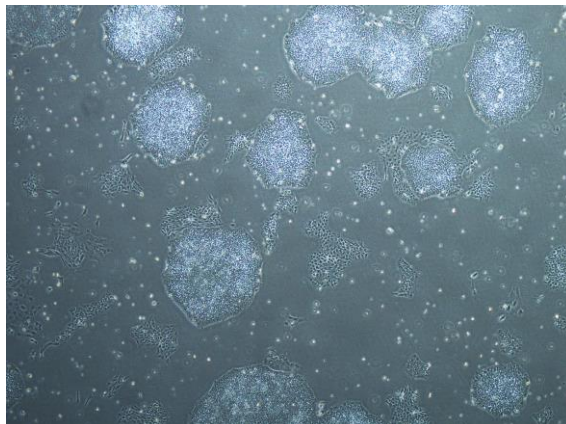
CiRA-j-1401-D: passage-3



CiRA-j-1401-E: passage-3



CiRA-j-1401-F: passage-3



(All images were captured at 4x magnification)